



# DAMEN FAST CREW SUPPLIER<sup>®</sup> 5009

“Oil Recovery Vessel”

## GENERAL

HULL MATERIAL	Steel
SUPERSTRUCTURE	Aluminium
BASIC FUNCTIONS	Oil Recovery
CLASSIFICATION	Bureau Veritas (other class on request)
NOTATION	✱ Hull • MACH Special Service / Fast Oil Recovery Vessel – Second Line DYNAPOS AM. Fire Fighting ship 1

## DIMENSIONS

LENGTH O.A.	53.25 m
BEAM O.A.	10.10 m
DEPTH AT SIDES	4.70 m
DRAUGHT APPROX.	3 m

## CAPACITIES

FUEL OIL	150.00 m <sup>3</sup>
FRESH WATER (DOM)	28.60 m <sup>3</sup>
RECOVERED OIL	66.00 m <sup>3</sup>
SEWAGE	1.00 m <sup>3</sup>
DECK SPACE	106.5 m <sup>2</sup>
DECK CARGO CAPACITY	150 tonnes

## PERFORMANCE

SPEED	22 knots
RANGE	2500 nm @ max speed

## PROPULSION SYSTEM

MAIN ENGINES	4 x Caterpillar 3512C
TOTAL POWER	4472 bkW
GEARBOXES	4 x Reintjes ZWVS 730

## ELECTRICAL EQUIPMENT

GENERATOR SETS	3 x 99 kW, 123kVA, 60 Hz
----------------	--------------------------

## DECK LAY-OUT

ANCHOR EQUIPMENT	1 x 184 kg H.H.P.
AFT DECK	Wood covering on the cargo deck

## AUXILIARY SYSTEMS

MECH. VENTILATION	72,000 m <sup>3</sup> / hr
CARGOPUMP (F.O.)	70 m <sup>3</sup> / hr @ 60m head (electric)
CARGOPUMP (RECOVERD OIL)	60 m <sup>3</sup> / hr @ 60m head (hydraulic)
FIRE FIGHTING	Fixed system in E.R. and tank room
BOWTHRUSTERS	2 x75 bkW

## OIL RECOVERY EQUIPMENT

OIL RECOVERY SYSTEM	2x Norlense Oil Trawl 1000
HANDLING REEL	Dedicated Norlense reel
OIL RECOVERY PUMP	Hydraulic pump in recovery system
SKIMMING WIDTH	30m approx

## FIRE FIGHTING EQUIPMENT

FIRE FIGHTING CAPACITY	2x 1200 m <sup>3</sup> /h
FIRE FIGHTING MONITOR	2x electrically controlled, remote operated throwing length approx. 120 m

## LIFE SAVING EQUIPMENT

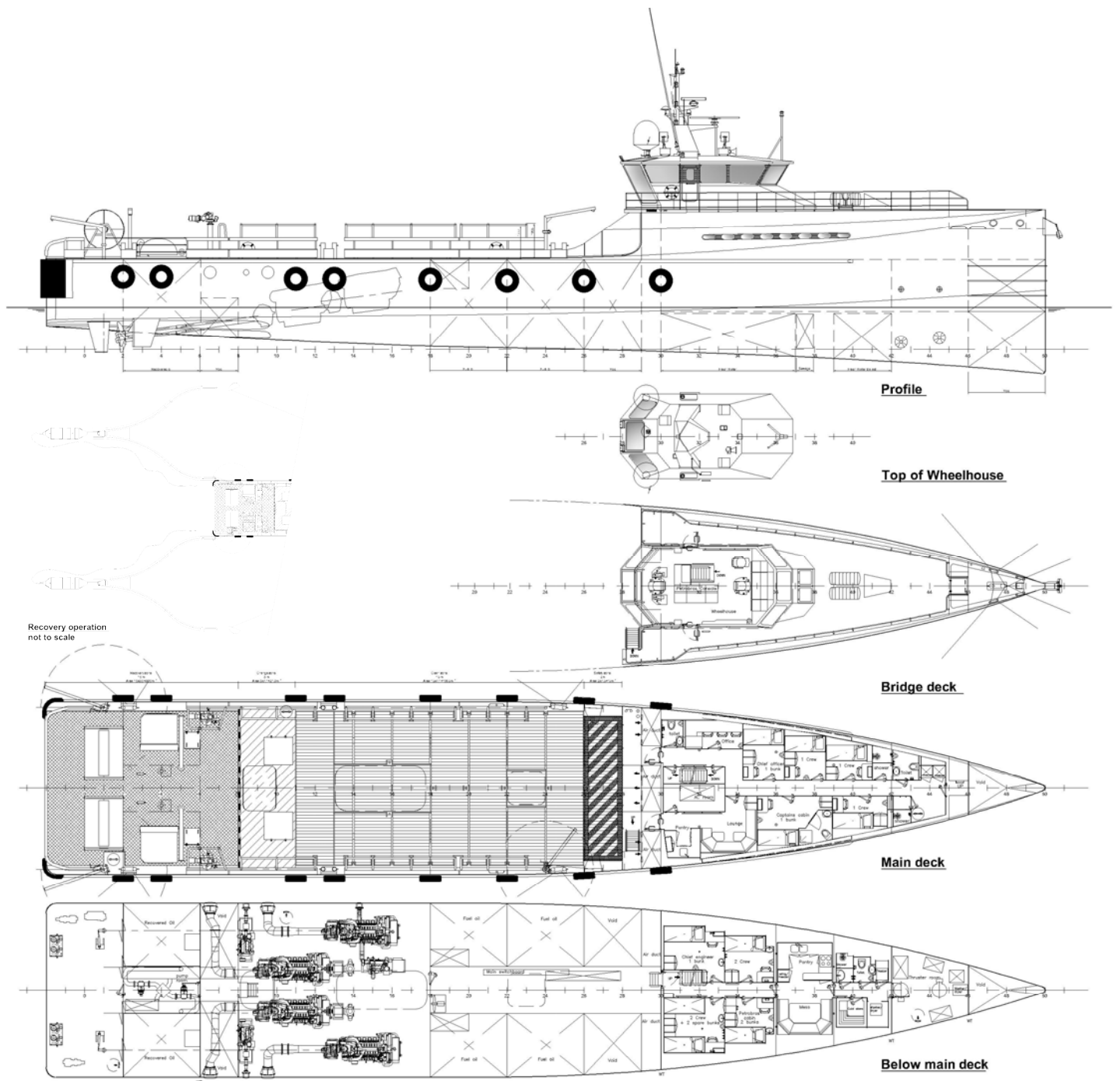
LIFE BUOYS	8
LIFE JACKETS	12
LIFE RAFTS	2 x 15 persons

## ACCOMMODATION

CREW	10 persons
PERSONEL	2 persons
AIR CONDITIONING	in wheelhouse and accommodation

## NAUTICAL, SURVEILLANCE AND COMMUNICATION EQUIPMENT

SEARCHLIGHTS	2x HMI/UV 1xHalogen
RADAR	1 x JRC JMA 5212-4
OIL RADAR	1x Miros OSD + IR camera
GYRO COMPASS	Alphatron
ECHO SOUNDER	Alphatron
VHF'S	2 x Sailor 6222, 1 x Sailor 6210
MF / HF	Sailor 6000 150W
INMARSAT C	2x Sailor 6110 mini C
GPS	JRC JRL 7800
CHART PLOTTER	C-map chart-plot function on radar display
NAVTEX	JRC NRC 333
AIS	JRC, JHS 183
AUTOPILOT	Alphatron Seapilot MFC
WINDMETERSET	Alphawind MFC
SPECIAL COMMUNICATION	PB Annex V



# DAMEN FAST CREW SUPPLIER<sup>®</sup> 5009

"Oil Recovery Vessel"

DAMEN SHIPYARDS GORINCHEM

Member of the DAMEN SHIPYARDS GROUP



Industrieterrein Avelingen West 20  
4202 MS Gorinchem

P.O. Box 1  
4200 AA Gorinchem  
The Netherlands

phone +31 (0)183 63 99 11  
fax +31 (0)183 63 21 89

info@damen.nl  
www.damen.nl